

WOOD SHEAR



Waste
Recycling



Food
Industry



Mineral /
Chemical



Demolition /
Construction



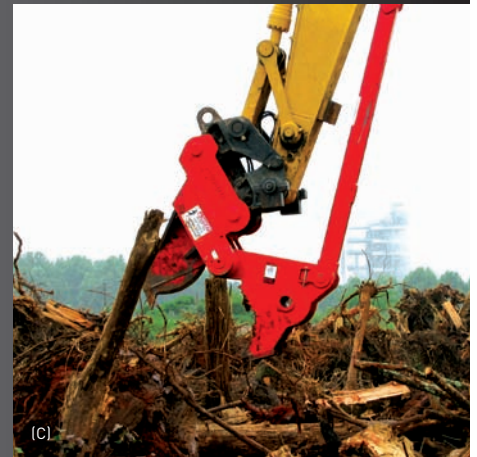
Downsize trees and stumps with speed and efficiency, safely from the cab of an excavator.



(A)



(B)



(C)

PRODUCT ADVANTAGES

VALUE AND SPEED The A-Ward Wood Shear is the preferred tool for processing of waste timber, logs and stumps down to manageable sizes. Cycling 12-14 times per minute, this tool is faster and is a fraction of the cost of comparable hydraulic wood shears.

EXTRA HEAVY DUTY PIVOT GROUP High tensile shaft, case hardened with a 360° lubricating system and fitted with semi-self lubricating bushes. An increase in pivot length together with a two-into-three pivot configuration creates greater jaw rigidity and better bearing load distribution.

INNOVATIVE BLADE CONFIGURATION The top jaw of the Wood Shear is convex, while the lower jaw has concaved serrated gripping teeth to help feed wood into the throat area for maximum shearing force.

QUIET OPERATION An excavator and Wood Shear make less noise than chain-saws, making the Wood Shear perfect for residential work.

TOUGH Thicker manufactured material sections and the use of high tensile steel for fabrication gives the Wood Shear greater durability and rigidity.

SIMPLE BLADE MAINTENANCE

The replaceable shear blade can be ground sharp using a hand held disc grinder. Worn blades and serrated grip pads can be replaced easily.

MORE POWER-FASTER CHANGE The Power-Positive attachment coupling system creates 25% more power and allows fast changeovers to OEM buckets and other A-Ward attachments such as Concrete Shear, Rail Shear, Grapple Jaw, Steel Shear, Pulveriser Jaw and Sieve Rakes.

IMAGES: (A) & (B) Wood Shear in action; (C) Showing jaw opening



IMAGES: (D) & (D Insert) Down sizing timber; (E) Wood Shear profile; (F) Showing the new stump ripper claws on the lower jaw

APPLICATIONS

LAND CLEARING Excels in the first stage of clearing trees and stumps from land as well as removing tree roots while leaving the soil behind.

WOOD PROCESSING Perfect for quickly downsizing logs and stumps for greater grinder production.

FIREWOOD SPLITTING Quickly move about the pile and slice logs into firewood safely from the cab of your excavator.

THE A-WARD SOLUTION

At A-Ward Attachments we pride ourselves on providing economical and comprehensive attachment solutions for today's demolition contractors and recyclers. Our patented Power-Positive attachment coupling system allows the operator to change to OEM Buckets and other A-Ward attachments in less than one minute.



Concrete Shear: Use in place of a hydraulic hammer for cost effective primary demolition and downsizing of oversized concrete debris.



Grapple Jaw: The severe duty Grapple Jaw features AR 400 construction, thicker skins, and multiple box section anti-torsion stiffeners. Performs in the harshest demolition and scrap handling environments.

SPECIFICATIONS

WOOD SHEAR SPECIFICATIONS													
MODEL #	Excavator Weight approx		Attachment Weight approx		Wood Shear Jaw Opening		Upper Jaw Width		Lower Jaw Width		Jaw Cutting Length		
	[000 lbs]	[000 kg]	[lbs]	[kg]	[inch]	[mm]	[inch]	[mm]	[inch]	[mm]	[inch]	[mm]	
AW120	26	12	1870	850	33.5	850	2	50	8.6	220	17	430	
AW200	44	20	2750	1250	37.4	950	2.4	60	9.8	250	20	510	
AW300	66	30	3080	1400	41.7	1060	2.4	60	11.8	240	24.6	625	
AW400	88	40	4180	1900	47.6	1210	3.1	80	13.8	260	28.3	720	
AW650	143	65	5500	2500	58.6	1490	4	100	16.7	425	34.8	885	



HEAD OFFICE (NEW ZEALAND) A-Ward Attachments Ltd 17 Miami Parade, Penrose, Auckland 1061, New Zealand
 → Chris Wilson e chris@a-ward.com p 0800 215 911 f +64 9 634 5128

THE WORLD'S FASTEST... www.a-ward.com