

## MULTI PROCESSOR



Waste  
Recycling



Food  
Industry



Mineral /  
Chemical



Demolition /  
Construction



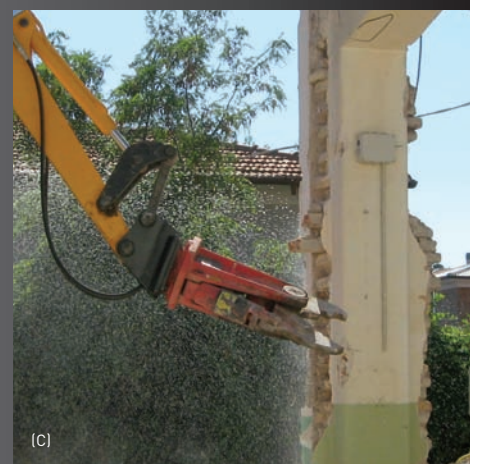
Affordable while offering greater versatility and excellent power to weight ratio. **Perfect for precision dismantling.**



(A)



(B)



(C)

### PRODUCT ADVANTAGES

**VERSATILE** Multi Processors are ideal for demolition and scrap recycling operations. Following A-Ward Attachments' mechanical shear ideology, the multi-shear offers the user incredible versatility through the means of interchangeable jaws, ensuring the right tool for the right application.

**EFFICIENT** 360° continuous rotation is powered by a high-torque, strongly designed orbital drive motor with cross-over port relief protection. The continuous rotation allows for efficient processing at any angle.

**POWERFUL** The two-cylinder design of the A-Ward Multi Processor offers a

higher power-to-weight ratio than single cylinder systems. Power is also maintained through the entire stroke, which levels off the power curve.

**JAWS** A-Ward currently offers up to 4 jaw sets including: Steel Shear, Concrete Pulveriser, Concrete Shear, and Wood Shear. The Multi Processor jaws are easily changed in the field at approximately one hour per changeover.

**SPEED** Speed valve provides fast cycle times.

**DURABLE** A-Ward's bearing design incorporates a large diameter semi self

lubricating system for increased life and less maintenance. The cylinder rod and hydraulic components are completely enclosed for maximum protection.

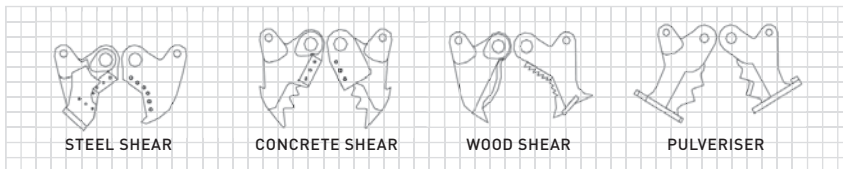
**COMPATIBILITY** The A-Ward Multi Processor can be mounted on any machine. It is best suited to the A-Ward Quick Hitch but can be set up on other machines with pin and bushing kit. The A-Ward heavy duty Quick Hitch can easily handle the operating weight of the Multi-Shear unit.

**IMAGES:** (A) Concrete Pulverising Jaw; (B) Super heavy duty concrete shear; (C) Mini Excavator Concrete Shear



IMAGES: (D) Mini Excavator Rotating Shear Jaw; (E) Steel Shear Jaw & (F) Large protected cylinders

APPLICATIONS



**Steel Shear:** Affordable way to process medium to heavy gauge scrap and demolish modern steel structure, using smaller size carrier machines.

**Concrete Shear:** Use in place of a hydraulic hammer for cost effective primary demolition of concrete structure, by breaking concrete and cutting reinforcing steel.

**Wood Shear:** A cost effective way to process large diameter stumps and logs down to a usable size, using smaller size carrier machines.

**Pulveriser Jaw:** Separate re-bar from concrete quickly and quietly. Crush cast iron and car engines and gearboxes safely.

**Jaw Options:** Are available within our range of specialised jaw products.

THE A-WARD SOLUTION

At A-Ward Attachments we pride ourselves on providing economical and comprehensive attachment solutions for today's demolition contractors and recyclers. Our patented Power-Positive attachment coupling system allows the operator to change to OEM Buckets and other A-Ward attachments in less than one minute.

SPECIFICATIONS

MULTI PROCESSOR SPECIFICATIONS																				
MODEL #	Excavator Weight Approx.				Attachment Weight Approx.				SHEAR JAW				PULVERISER JAW				CRUSH JAW			
	[Ton]	[000 lb]	[kg]	[lb]	Max. Cutting Force	Max. Jaw Opening	Cutting Jaw Length		Max. Jaw Opening	Cutting Jaw Length		Max. Jaw Opening	Cutting Jaw Length							
						[mm]	[inch]	[mm]	[inch]	[mm]	[inch]	[mm]	[inch]	[mm]	[inch]	[mm]	[inch]			
<b>AMP1000R</b>	2-10	4.5-22	400	880	80*2	430	17	170	6.7	220	17	170	6.7	-	-	-	-			
<b>AMP1800R</b>	10-18	22-40	1,100	2,420	170*2	620	24.4	340	13.4	310	24.4	340	13.4	520	20.4	340	13.4			
<b>AMP2900R</b>	18-28	40-60	1,800	3,960	225*2	750	29.2	380	15	340	29.2	380	15	580	22.8	380	15			
<b>AMP3500R</b>	27-38	60-84	2,800	6,175	330*2	880	34.6	420	16.5	520	34.6	420	16.5	690	27.2	420	16.5			
<b>AMP5500R</b>	35-55	77-120	3950	8,690	410*2	1,230	48.4	630	24.8	580	48.4	630	24.8	960	37.8	630	24.8			



HEAD OFFICE (NEW ZEALAND) A-Ward Attachments Ltd 17 Miami Parade, Penrose, Auckland 1061, New Zealand  
 → Chris Wilson e chris@a-ward.com p 0800 215 911 f +64 9 634 5128

THE WORLD'S FASTEST... [www.a-ward.com](http://www.a-ward.com)